

NAVITOR™ TAVI SYSTEM

RIGHT VALVE.
RIGHT TIME.



Information contained herein for DISTRIBUTION in Europe, Middle East and Africa ONLY.
Always check the regulatory status of the device in your region.



TODAY.

EASE OF USE.

Controlled deployment provides **stable** and **accurate** valve placement.

The only self-expanding valve with **early leaflet functionality** for **hemodynamic stability** throughout the procedure.

EASE OF DELIVERY.

- 14 F delivery system with 5.0 mm minimum vessel diameter**
- Low profile, highly flexible catheter
- Hydrophilic coating reduces friction by 98%⁴

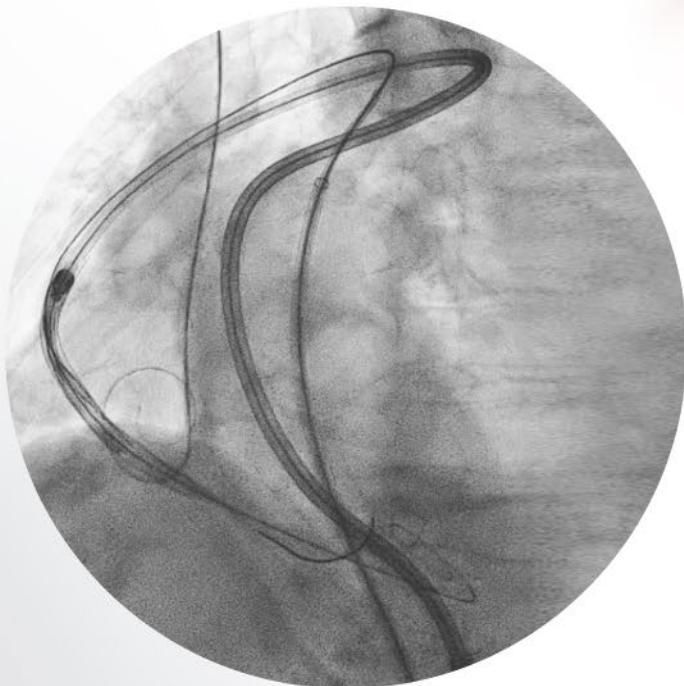


Image courtesy of Dr. Sumanto Mukhopadhyay,
St. Bartholomew's Hospital, UK.

“Easy to implant, but also easy to teach and to reproduce.”

– Maurizio Taramasso, MD, PhD^s

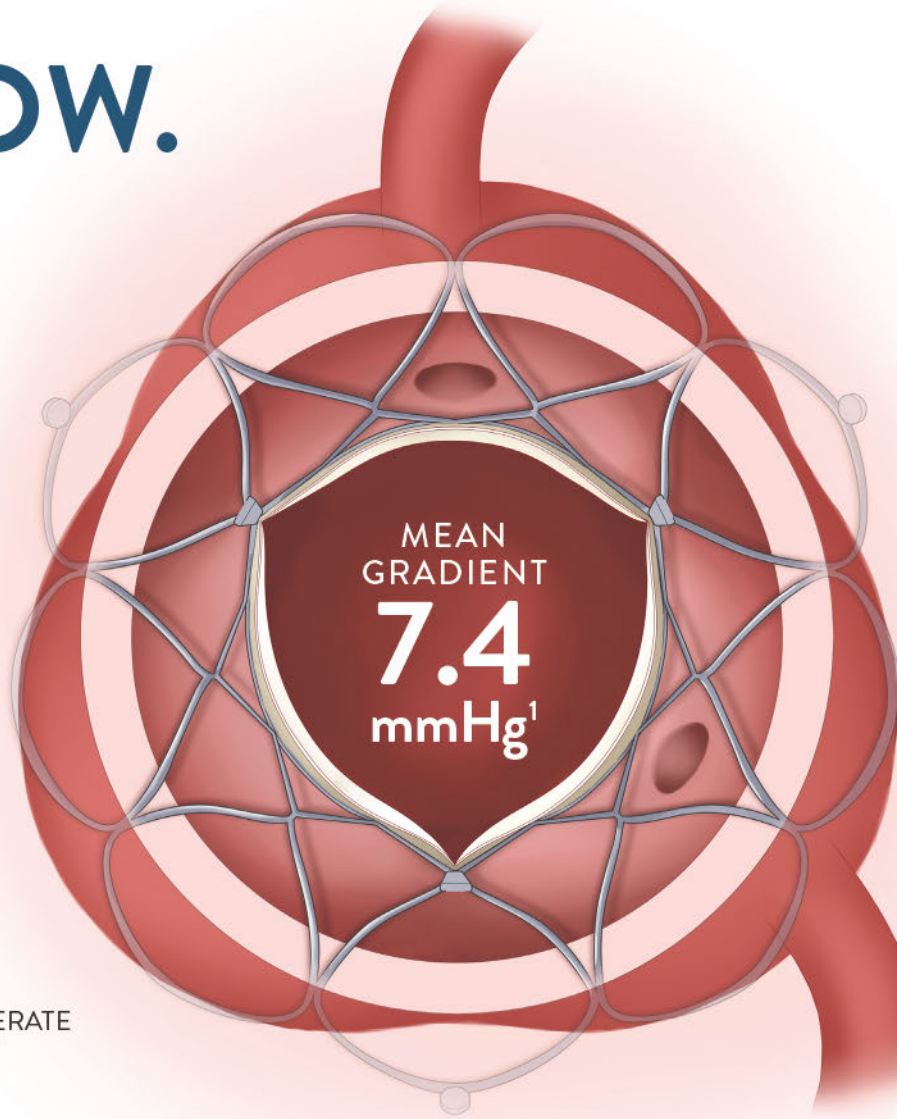
TOMORROW.

SINGLE-DIGIT GRADIENTS¹

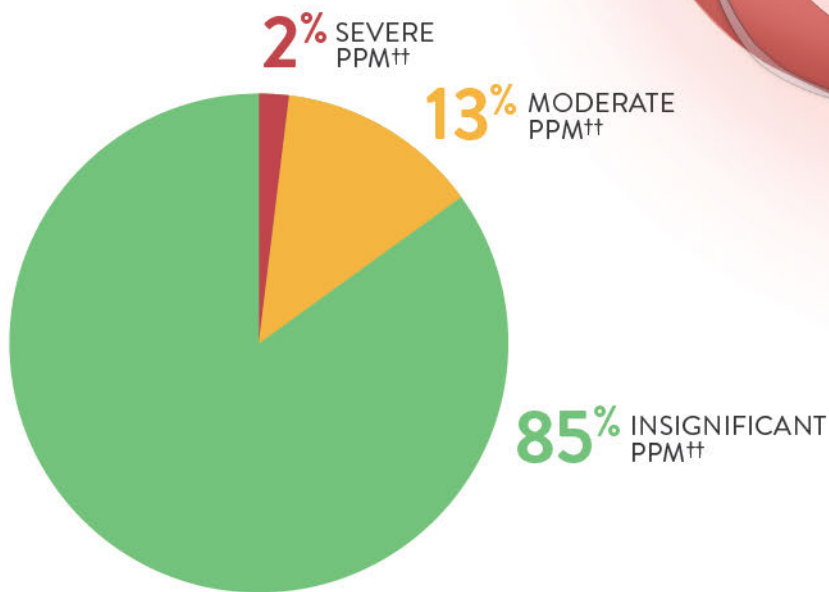
- Intra-annular leaflet design that delivers single-digit gradients^{5†}

“Future durability of a valve is determined by hemodynamics.”

– Dave Smith, MD[§]



MINIMAL PROSTHESIS-PATIENT MISMATCH (PPM)²



SMART SEALING—PVL MITIGATION

30-DAY ECHO CORE LAB DATA¹

80%
NONE/TRACE

20%
MILD

0%
MODERATE

0%
SEVERE

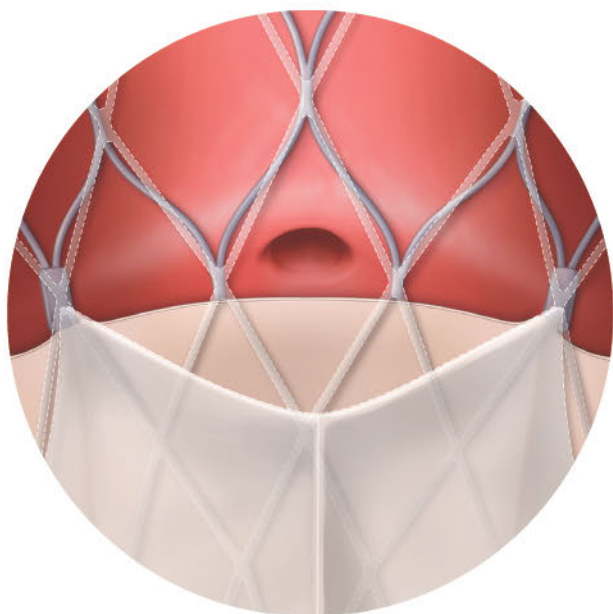
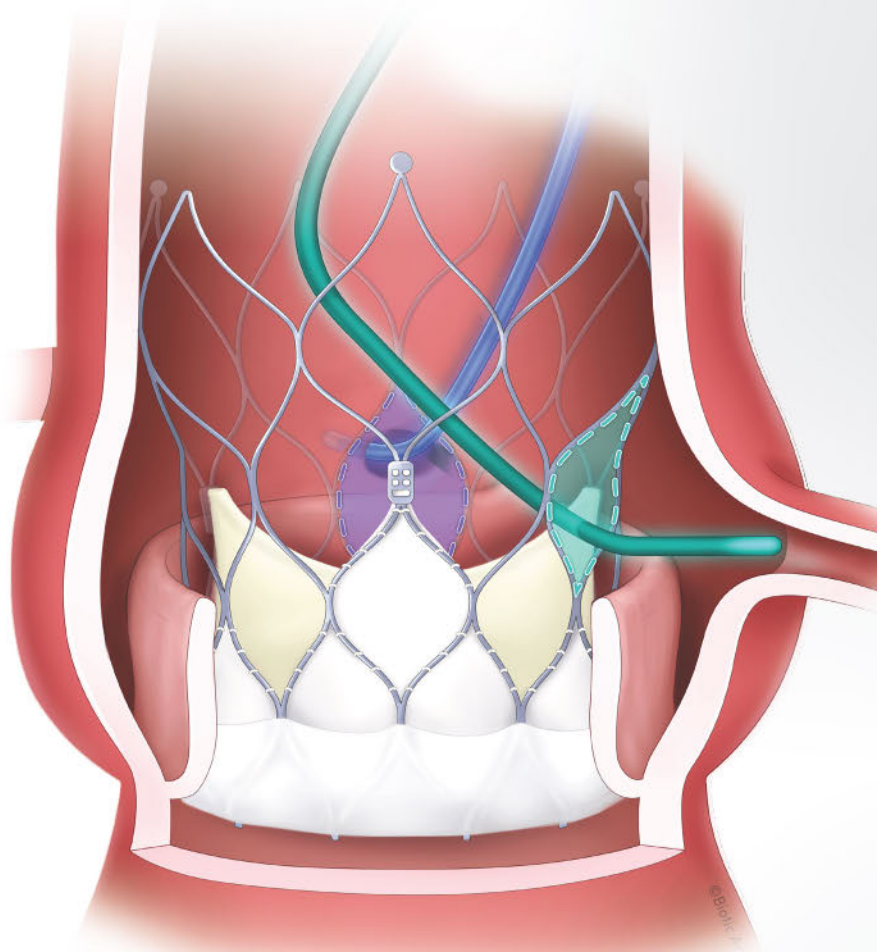
THE ROAD AHEAD.

UNCOMPROMISED CORONARY ACCESS

- Intra-annular leaflet design
- Large-cell geometry



Image courtesy of Dr. Norio Tada, Sendai Kousei Hospital, Japan.



For illustrative purposes only. TAVI frame used is not meant to depict any specific valve.

LOWEST NEOSKIRT HEIGHT^{3*}

Among commercially available self-expanding valves, Abbott's TAVI system offers the lowest neoskirt height.



23 mm[‡]

UP TO 24% LOWER THAN OTHER VALVES³

PATIENT **LIFETIME** MANAGEMENT

Caring for TAVI patients means considering not only their needs today, but also how you can empower a lifetime of better care, from the initial implantation to the next intervention.



1 TODAY

Easy, calm, and stable deployment.

DELIVERABILITY

EASE OF USE

2 TOMORROW

Excellent hemodynamics.

SINGLE-DIGIT GRADIENTS¹

MINIMAL PROSTHESIS-PATIENT MISMATCH²

EXCELLENT PVL MITIGATION¹

3 THE ROAD AHEAD

Uncompromised coronary access for future procedures.

CORONARY ACCESS

LOWEST NEOSKIRT HEIGHT^{3*}

FOR TODAY, TOMORROW, AND THE ROAD AHEAD.

SEE WHY NAVITOR MAY BE THE RIGHT VALVE FOR
YOUR PATIENTS.

1

TODAY

DELIVERABILITY

EASE OF USE

2

TOMORROW

SINGLE-DIGIT GRADIENTS¹

MINIMAL PROSTHESIS-
PATIENT MISMATCH²

EXCELLENT PVL
MITIGATION¹

3

THE ROAD AHEAD

CORONARY ACCESS

LOWEST NEOSKIRT HEIGHT^{3*}

DISCOVER WHAT HEART VALVE EXPERTS THINK



SCAN QR CODE
TO LEARN MORE

*Among commercially available self-expanding TAVI valves.

**14 F equivalent integrated sheath diameter for patients requiring 23 mm or 25 mm valve. 15 F equivalent integrated sheath diameter for patients requiring 27 mm or 29 mm valve.

§The testimonial does not provide any indication, guide, warranty, or guarantee as to the response a patient may have to the treatment or effectiveness of the product or therapy in discussion. Opinions about the treatment discussed can and do vary and are specific to the individual and might not be representative of others. †Based on Abbott internal testing.

††Prosthesis-patient mismatch (PPM) classified according to VARC 2 criteria and adjusted for BMI.

‡For Portico 25 mm valve.

References: 1. Smith D. One-year clinical trial results with a next-generation aortic transcatheter heart valve. Presented at: EuroPCR conference; May 17-20, 2022. 2. Sultan I. Hemodynamic outcomes and prosthesis-patient mismatch of the Navitor valve. Presented at: TVT 2022. June 8-10, 2022. 3. Akodad M, Sellers S, Gulsin GS, et al. Leaflet and neoskirt height in transcatheter heart valves: implications for repeat procedures and coronary access. *JACC Cardiovasc Interv.* 2021;14(20):2298-2300. doi:10.1016/j.jcin.2021.07.034 4. Abbott data on file 90346620. 5. Abbott data on file 90859610.

CAUTION: This product is intended for use by or under the direction of a physician. Prior to use, reference the Instructions for Use inside the product carton (when available) or at efu.abbottvascular.com or at medical.abbott/manuals for more detailed information on Indications, Contraindications, Warnings, Precautions, and Adverse Events.

Information contained herein for **DISTRIBUTION in Europe, Middle East and Africa ONLY**. Always check the regulatory status of the device in your region.

Illustrations are artist's representations only and should not be considered as engineering drawings or photographs.

Photo(s) on file at Abbott.

Abbott Vascular International BVBA

Park Lane, Culliganlaan 2b, 1831 Diegem, Belgium

™ Indicates a trademark of the Abbott group of companies.

www.structuralheart.abbott

©2023 Abbott. All rights reserved. 9-EH-1-13898-01 03-2023 REV B | Item approved for EMEA use only.

