

GRAFTMASTER

Coronary Stent Graft System

The reassurance of GRAFTMASTER when you need it most

Ordering Information

Stent Diameter	Stent Length		
	16 mm	19 mm	26 mm
2.8 mm	1012817-16	1012817-19	1012817-26
3.5 mm	1012818-16	1012818-19	1012818-26
4.0 mm	1012819-16	1012819-19	1012819-26
4.5 mm	1012820-16	1012820-19	1012820-26
4.8 mm	1012821-16	1012821-19	1012821-26

Technical Information

GRAFTMASTER Stent Diameter	2.8 - 4.0 mm	4.5 - 4.8 mm
Stent Material	Stainless Steel 316L	Stainless Steel 316L
Graft Material	Expandable Polytetrafluoroethylene (ePTFE) sandwiched between two identical stents	Expandable Polytetrafluoroethylene (ePTFE) sandwiched between two identical stents
Wall Thickness (mm)	0.52 mm	0.52 mm
Balloon Material	Semi Compliant	Semi Compliant
Shaft Size (F)	2.0F – 2.7F	2.0F – 2.7F
Minimum Deployment Pressure (ATM)	15	15
Rated Burst Pressure (ATM)	16	16
Minimum Guide Wire (in)	0.014"	0.014"
Useable Length (cm)	143 cm	143 cm
Stent Expansion Range (mm)	3.0 – 5.0 mm	3.0 – 5.0 mm
Minimum Guide Catheter (in) / F	0.068" / ≥ 6F	0.074" / ≥ 7F
Crimped Stent Profile (in)	0.064"	0.068"
Tip Entry Profile	0.024"	0.024"
Average Crossing Profile	0.061"	0.068"

Please contact your local sales representative for more information

Abbott Vascular International BVBA

Park Lane, Culliganlaan 2B, 1831 Diegem, Belgium, Tel: 32.2.714.14.11

Products intended for use by or under the direction of a physician. Prior to use, it is important to read the package insert thoroughly for instructions for use, warnings and potential complications associated with use of this device. Information contained herein is for distribution for *Europe, Middle East and Africa ONLY*. Please check the regulatory status of the device before distribution in areas where CE marking is not the regulation in force.

Tests performed by and data on file at Abbott Vascular. All drawings are artist's representations only and should not be considered as an engineering drawing or photograph. Photo(s) on file at Abbott Vascular. GRAFTMASTER is a trademark of the Abbott Group of Companies.

For more information, visit our website at abbottvascular.com
©2012 Abbott. All rights reserved. 1-EH-1-2860-01 10/2012



GRAFTMASTER

Coronary Stent Graft System

Designed to Save Lives

Powered to Deliver

Trusted Solution in Severe Situations*



*As indicated in the IFU



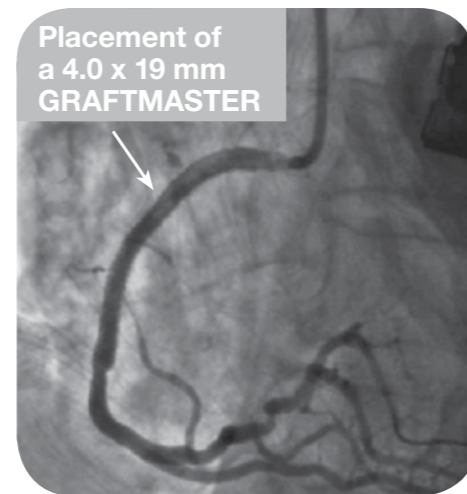
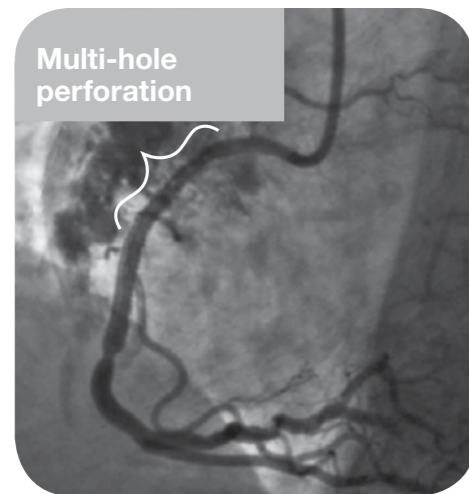
GRAFTMASTER

Coronary Stent Graft System

Designed to Save Lives

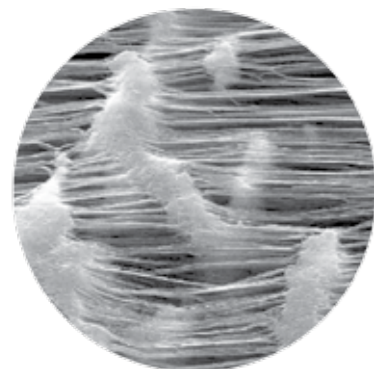
GRAFTMASTER represents an excellent interventional choice in acute situations

- PERFORATIONS
- RUPTURES
- ANEURYSMS
- BYPASS VEIN GRAFTS



Radial Strength and Visibility

Spiral Flex design allows the stent to exert maximum radial strength, and has outstanding visibility due to its unique sandwich design.



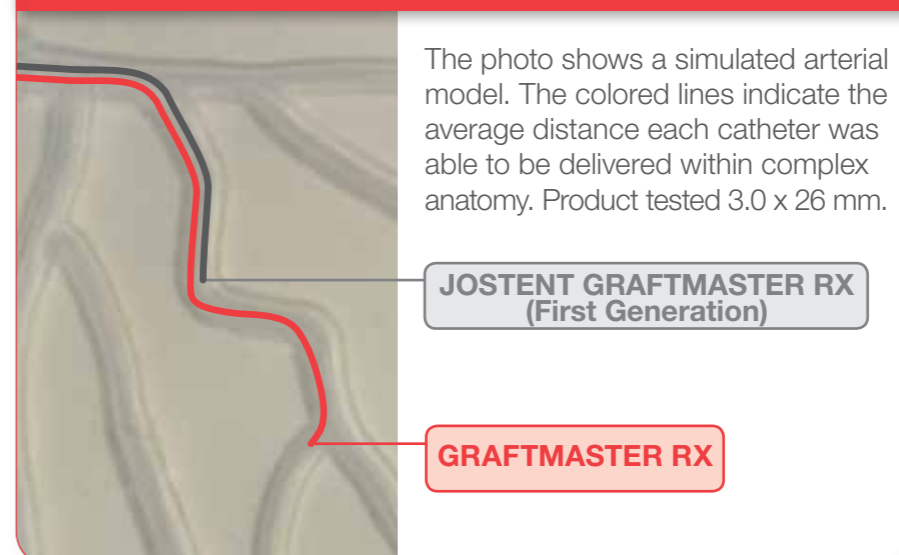
Expandable ePTFE Graft Material

ePTFE graft material is specifically developed by Abbott Vascular for integrating into a stent graft system and constructed to allow expansion in one direction, while remaining rigid longitudinally.

Powered to Deliver

- Advanced stent delivery system for improved deliverability†
 - Pushability: Reinforced supportive hypotube enables smooth transmission of force
 - Trackability: Smooth rounded tip tracks closely to the guide wire
- Low profile design for lesion access

Improved Deliverability In Complex Anatomy†



† As compared to the JOSTENT GRAFTMASTER RX.



Trusted Solution in Severe Situations