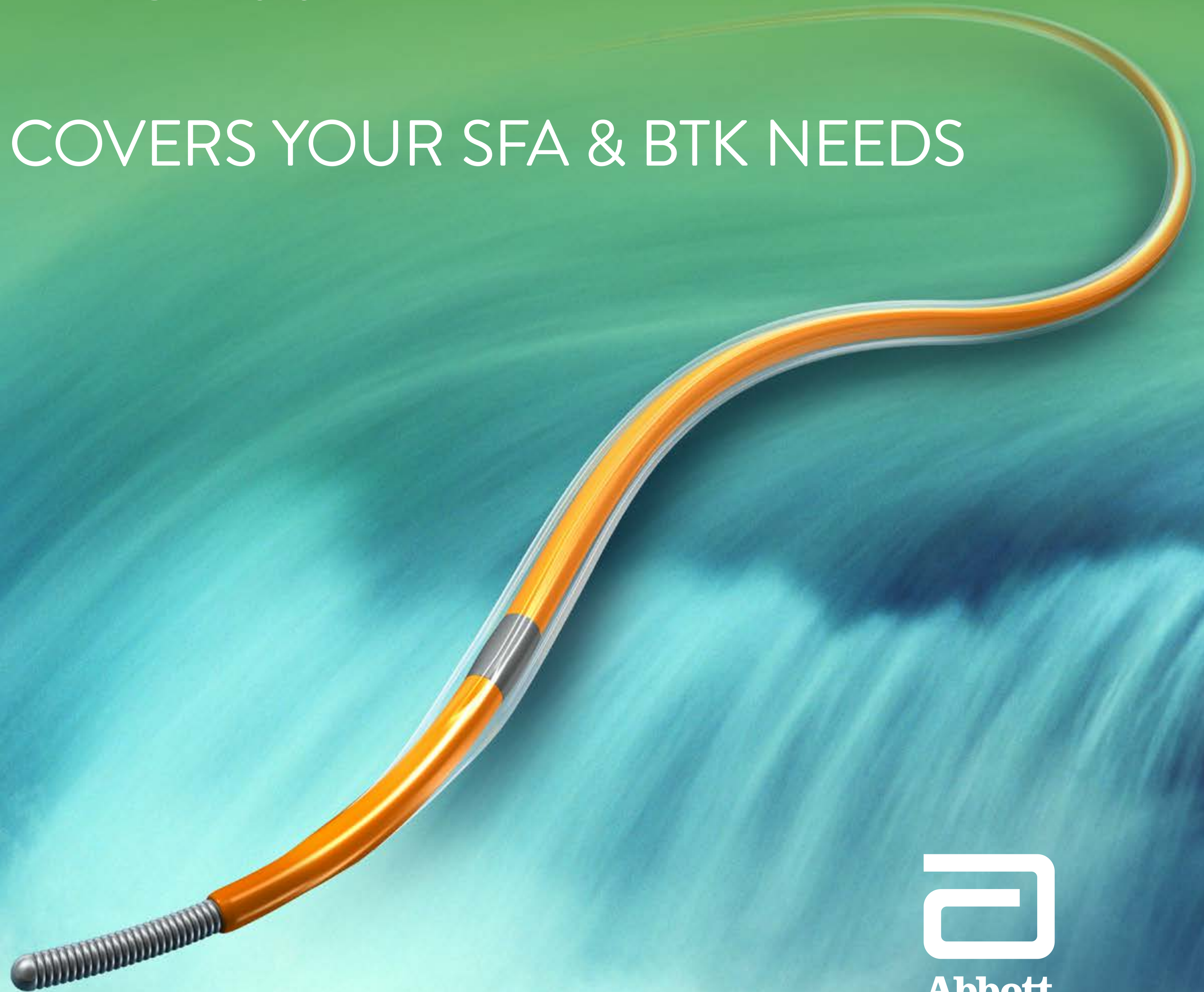


Armada 18

PTA Catheter

COVERS YOUR SFA & BTK NEEDS



Information contained herein for DISTRIBUTION outside of the U.S. ONLY. Check the regulatory status of the device in areas where CE marking is not the regulation in force.



Home



Catheter Design >>

Precision for SFA

Simplify your Dilatation

Single 018 Platform

Specifications

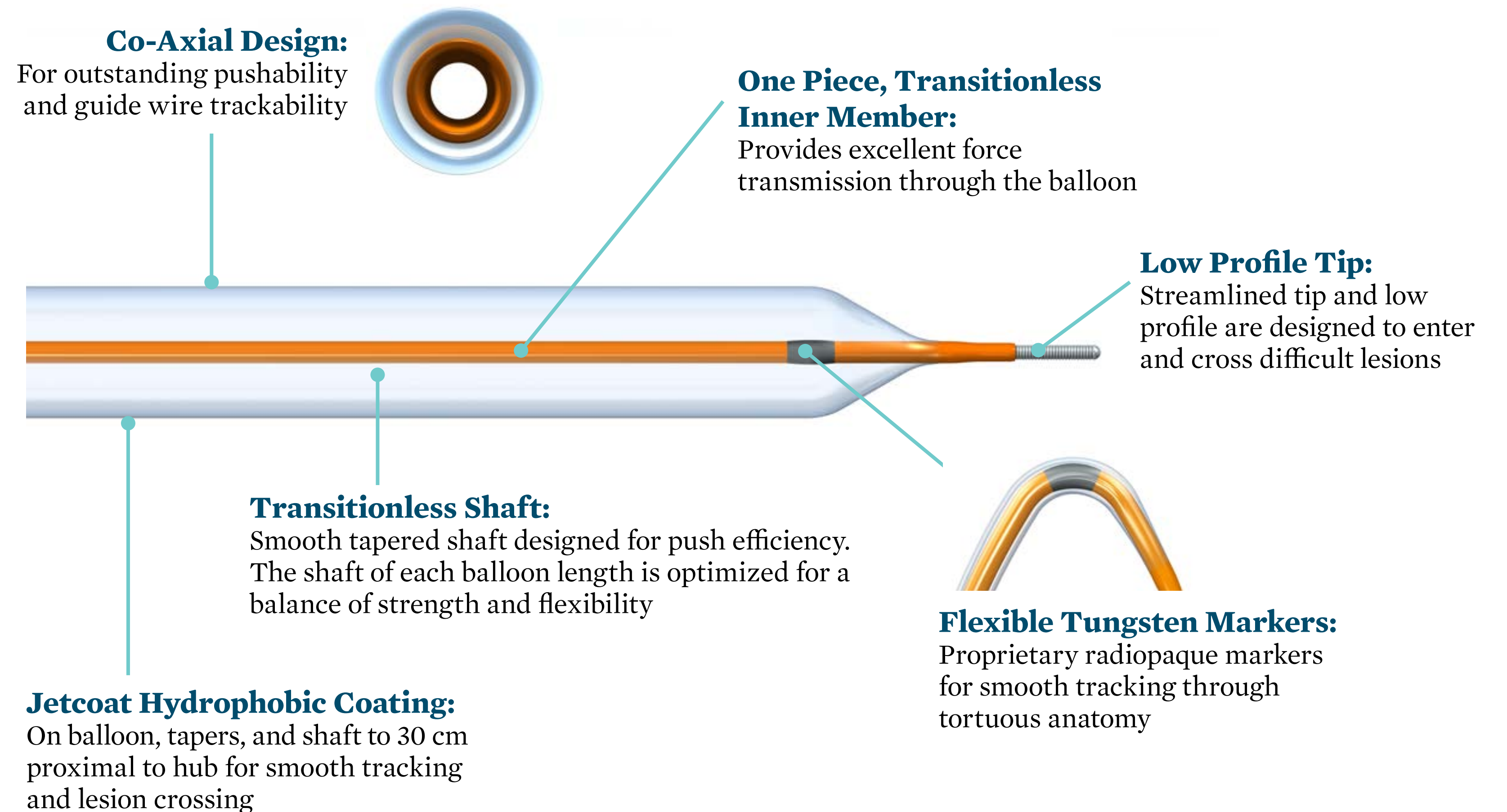
Ordering Information

CATHETER DESIGN

018

Armada 18

DESIGNED FOR OUTSTANDING PERFORMANCE



Information contained herein for DISTRIBUTION outside of the U.S. ONLY. Check the regulatory status of the device in areas where CE marking is not the regulation in force.

Home 

Catheter Design

Precision for SFA 

Simplify your Dilatation

Single 018 Platform

Specifications

Ordering Information

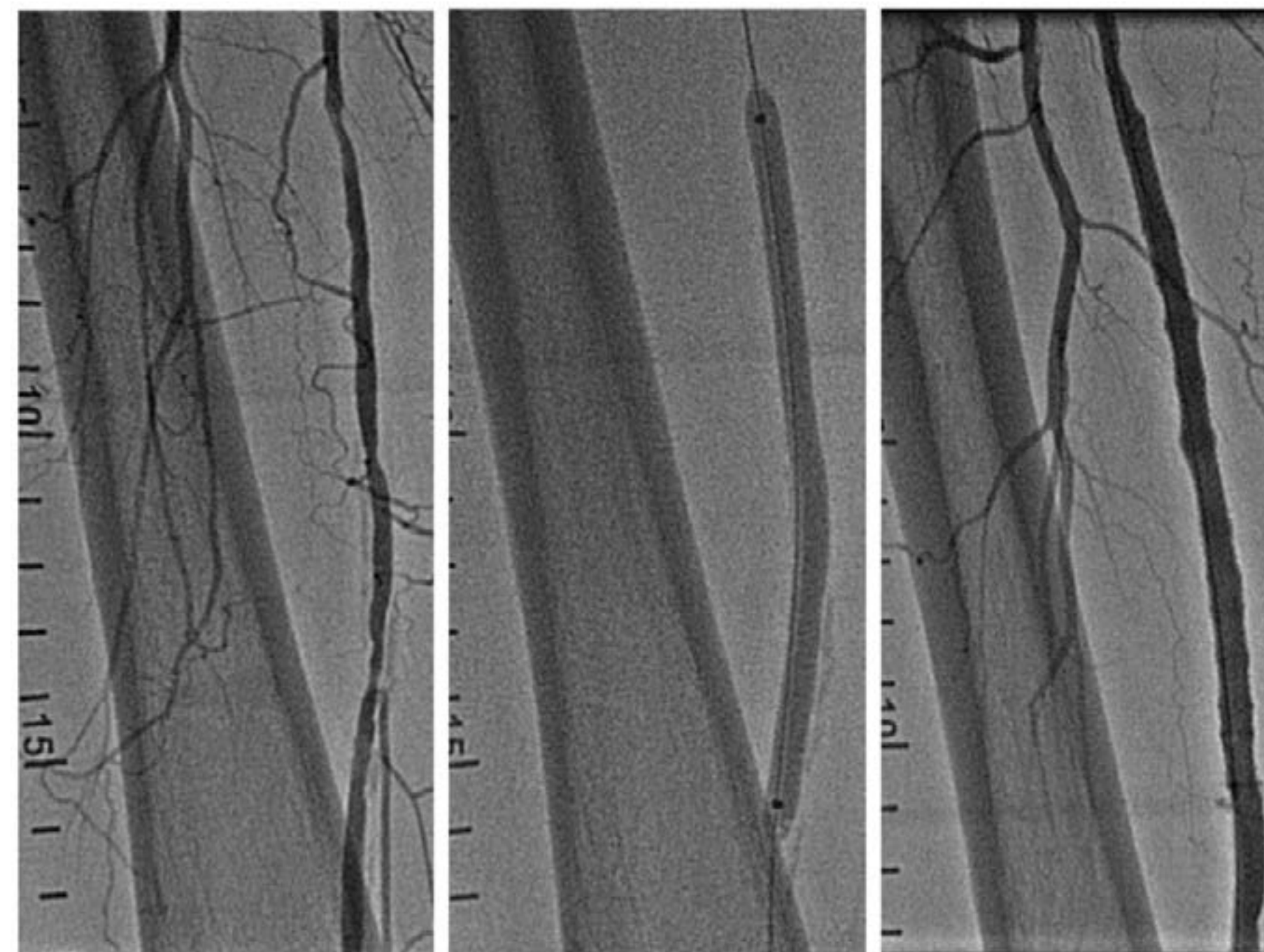
NEW LEVEL OF PRECISION FOR THE SFA

018

Armada 18

HAS A 5.5 mm DIAMETER AND LONGER LENGTHS

- **5.5 mm diameter and longer lengths enable accurate dilatation of lesions in the SFA for your final treatment choice**
- **Allows precise vessel preparation when implanting a 5.5 mm OD Supera**



Before

Lesion Dilatation

Post Implant

Information contained herein for DISTRIBUTION outside of the U.S. ONLY. Check the regulatory status of the device in areas where CE marking is not the regulation in force.

Source: Images from SUPERB trial.

Home 

Catheter Design

Precision for SFA

Simplify your Dilatation 

Single 018 Platform

Specifications

Ordering Information

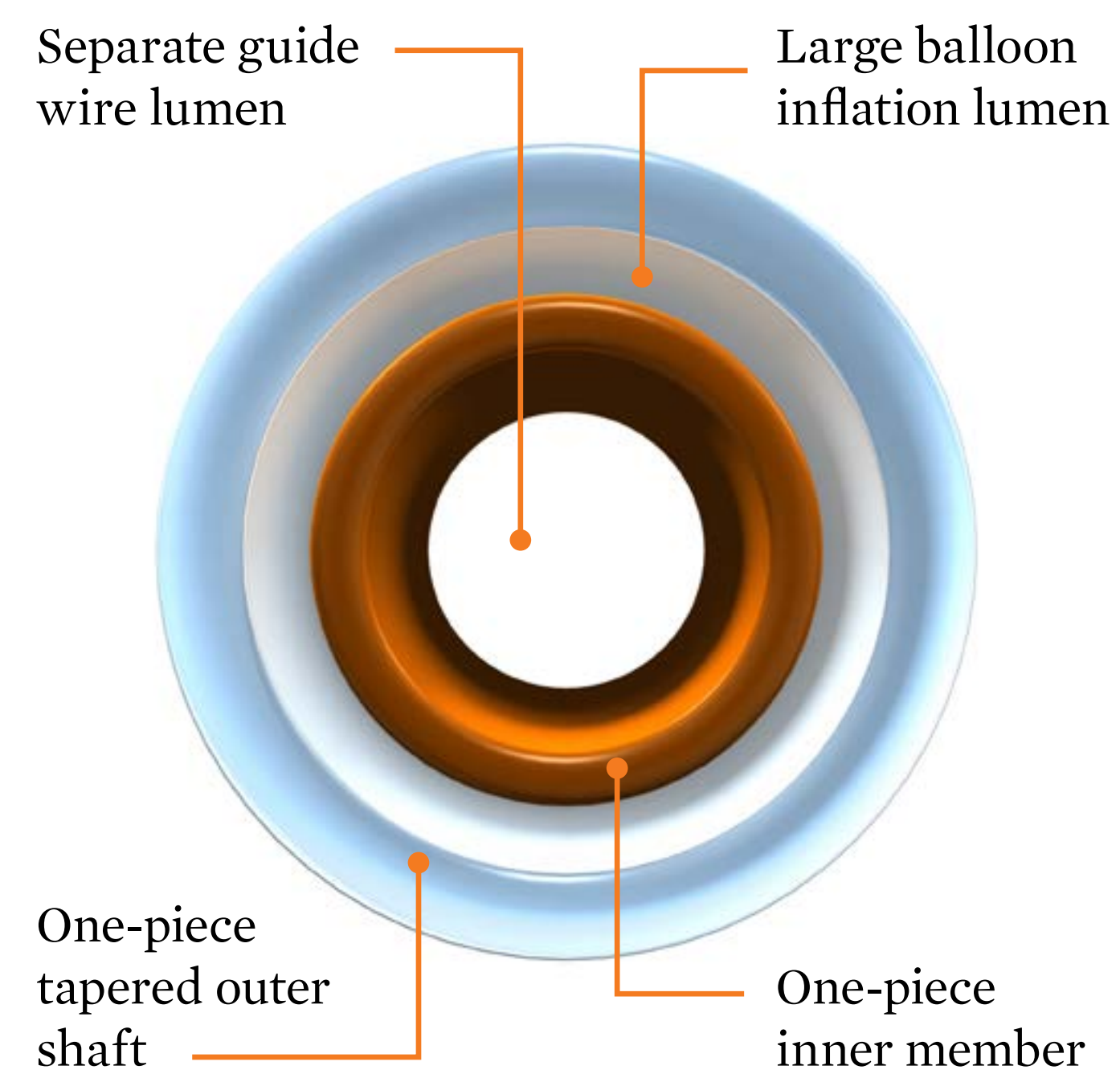
SIMPLIFY YOUR DILATATION

018

Armada 18 HAS A CO-AXIAL DESIGN

- **Consistent nominal and RBP pressures across all sizes**
- **Armada 18's coaxial, over-the-wire design results in excellent pushability, trackability, and deliverability for your challenging cases**

Co-axial Catheter Cross-section



Information contained herein for DISTRIBUTION outside of the U.S. ONLY. Check the regulatory status of the device in areas where CE marking is not the regulation in force.

Home 

Catheter Design

Precision for SFA

Simplify your Dilatation

Single 018 Platform 

Specifications

Ordering Information

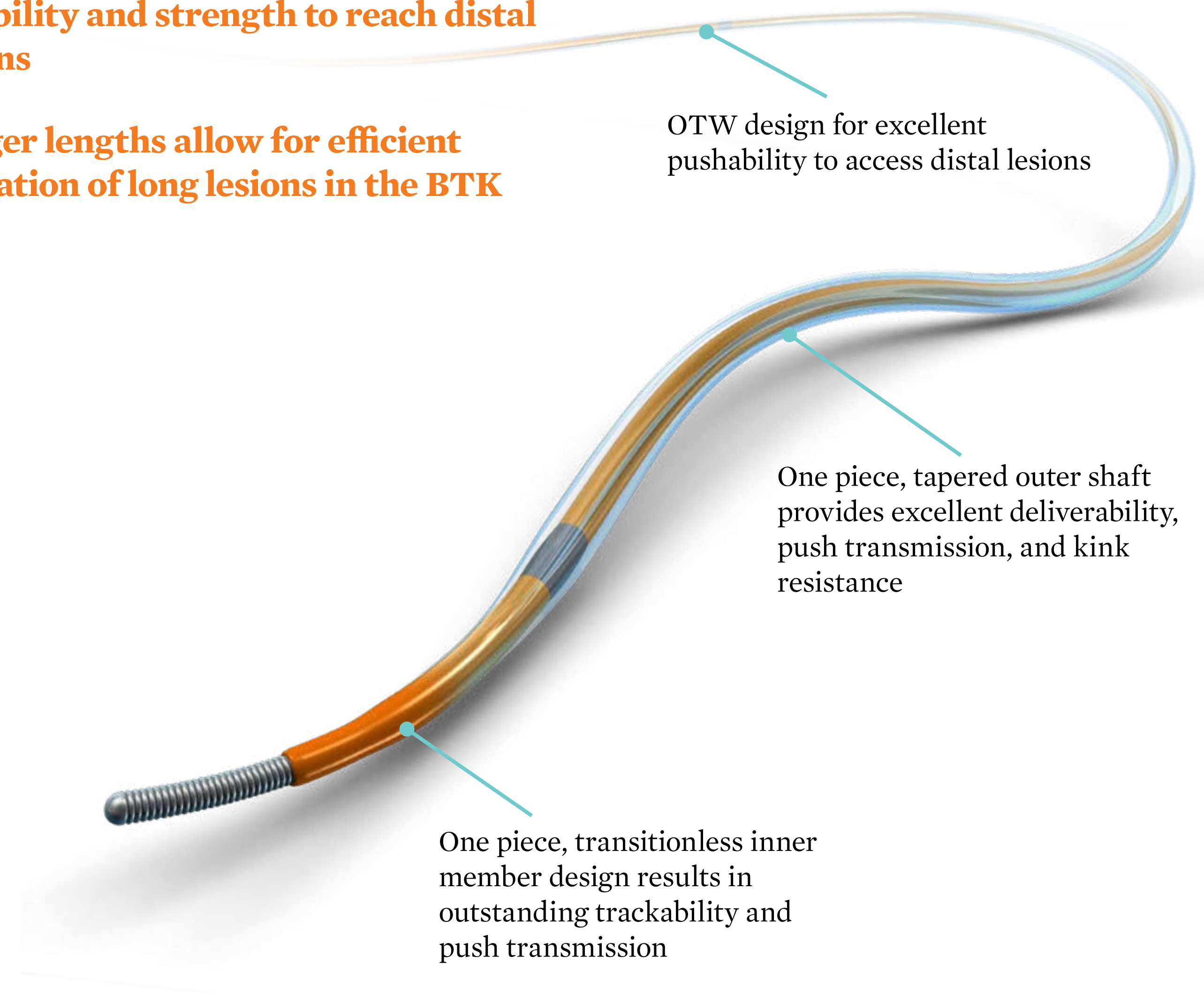
SINGLE 0.018 PLATFORM FOR SFA & BTK

018

Armada 18

EFFECTIVE FOR BTK APPLICATIONS

- **Catheter and balloon design combine flexibility and strength to reach distal lesions**
- **Longer lengths allow for efficient dilatation of long lesions in the BTK**



Information contained herein for DISTRIBUTION outside of the U.S. ONLY. Check the regulatory status of the device in areas where CE marking is not the regulation in force.

Home 

Catheter Design

Precision for SFA

Simplify your Dilatation

Single 018 Platform

Specifications 

Ordering Information

SIZE MATRIX AND SPECIFICATIONS

018

Armada 18

ARMADA 18 SIZE MATRIX AND SPECIFICATIONS

Balloon Diameters (mm)	Lengths (mm)								
	20	40	60	80	100	120	150	180	200
2.0									
2.5			Nominal pressure: 8 atm						
3.0			RBP: 14 atm						
4.0									
5.0									
5.5									
6.0									

Minimal sheath compatibility

4F

5F

The Armada 18 5.5 mm diameter is designed for pre-dilatation with a 5.5 mm OD Supera

Armada 18 is available in both 90 cm and 150 cm shaft lengths for all sizes

Information contained herein for DISTRIBUTION outside of the U.S. ONLY. Check the regulatory status of the device in areas where CE marking is not the regulation in force.

Home 

Catheter Design

Precision for SFA

Simplify your Dilatation

Single 018 Platform

Specifications

Ordering Information 

ORDERING INFORMATION

018

Armada 18

BALLOON DIAMETER (mm)	BALLOON LENGTH (mm)	STOCK NUMBER CATHETER LENGTH	
		90 cm	150 cm
2.0	20	1014252-020	1014259-020
2.0	40	1014252-040	1014259-040
2.0	60	1014252-060	1014259-060
2.0	80	1014252-080	1014259-080
2.0	100	1014252-100	1014259-100
2.0	120	1014252-120	1014259-120
2.0	150	1014252-150	1014259-150
2.0	180	1014252-180	1014259-180
2.0	200	1014252-200	1014259-200
2.5	20	1014253-020	1014260-020
2.5	40	1014253-040	1014260-040
2.5	60	1014253-060	1014260-060
2.5	80	1014253-080	1014260-080
2.5	100	1014253-100	1014260-100
2.5	120	1014253-120	1014260-120
2.5	150	1014253-150	1014260-150
2.5	180	1014253-180	1014260-180
2.5	200	1014253-200	1014260-200
3.0	20	1014254-020	1014261-020
3.0	40	1014254-040	1014261-040
3.0	60	1014254-060	1014261-060
3.0	80	1014254-080	1014261-080
3.0	100	1014254-100	1014261-100
3.0	120	1014254-120	1014261-120
3.0	150	1014254-150	1014261-150
3.0	180	1014254-180	1014261-180
3.0	200	1014254-200	1014261-200
4.0	20	1014255-020	1014262-020
4.0	40	1014255-040	1014262-040
4.0	60	1014255-060	1014262-060
4.0	80	1014255-080	1014262-080
4.0	100	1014255-100	1014262-100
4.0	120	1014255-120	1014262-120
4.0	150	1014255-150	1014262-150
4.0	180	1014255-180	1014262-180
4.0	200	1014255-200	1014262-200

BALLOON DIAMETER (mm)	BALLOON LENGTH (mm)	STOCK NUMBER CATHETER LENGTH	
		90 cm	150 cm
5.0	20	1014256-020	1014263-020
5.0	40	1014256-040	1014263-040
5.0	60	1014256-060	1014263-060
5.0	80	1014256-080	1014263-080
5.0	100	1014256-100	1014263-100
5.0	120	1014256-120	1014263-120
5.0	150	1014256-150	1014263-150
5.0	180	1014256-180	1014263-180
5.0	200	1014256-200	1014263-200
5.5	20	1014257-020	1014264-020
5.5	40	1014257-040	1014264-040
5.5	60	1014257-060	1014264-060
5.5	80	1014257-080	1014264-080
5.5	100	1014257-100	1014264-100
5.5	120	1014257-120	1014264-120
5.5	150	1014257-150	1014264-150
5.5	180	1014257-180	1014264-180
5.5	200	1014257-200	1014264-200
6.0	20	1014258-020	1014265-020
6.0	40	1014258-040	1014265-040
6.0	60	1014258-060	1014265-060
6.0	80	1014258-080	1014265-080
6.0	100	1014258-100	1014265-100
6.0	120	1014258-120	1014265-120
6.0	150	1014258-150	1014265-150
6.0	180	1014258-180	1014265-180
6.0	200	1014258-200	1014265-200

Information contained herein for DISTRIBUTION outside of the U.S. ONLY. Check the regulatory status of the device in areas where CE marking is not the regulation in force.

Home 

Catheter Design

Precision for SFA

Simplify your Dilatation

Single 018 Platform

Specifications

Ordering Information

CAUTION: This product is intended for use by or under the direction of a physician. Prior to use, reference the Instructions for Use, inside the product carton (when available) or at eifu.abbottvascular.com or at manuals.sjm.com for more detailed information on Indications, Contraindications, Warnings, Precautions and Adverse Events. **Information contained herein for DISTRIBUTION outside of the U.S. ONLY.** Check the regulatory status of the device in areas where CE marking is not the regulation in force.

Illustrations are artist's representations only and should not be considered as engineering drawings or photographs. Photo(s) on file at Abbott.

Abbott International BVBA

Park Lane, Culliganlaan 2B, 1831 Diegem, Belgium, Tel: 32.2.714.14.11

Armada and Supera are registered trademarks of the Abbott Group of Companies.

www.Vascular.Abbott

©2018 Abbott. All rights reserved. AP2941134-OUS Rev. B

