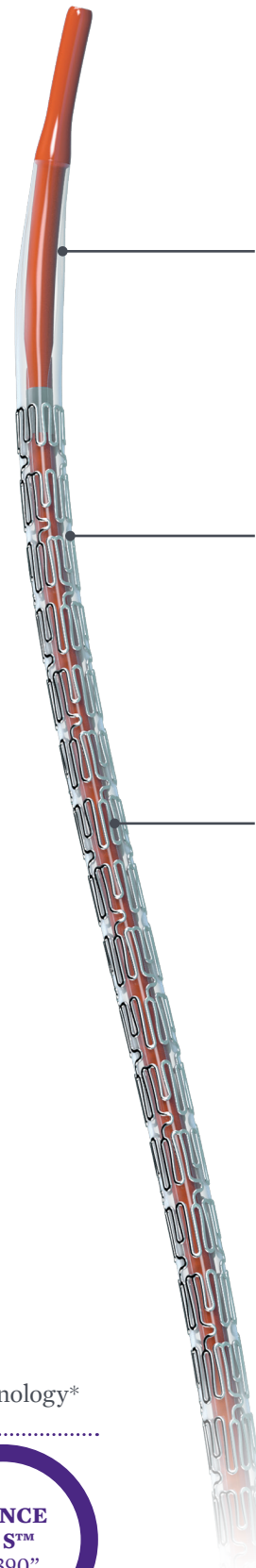
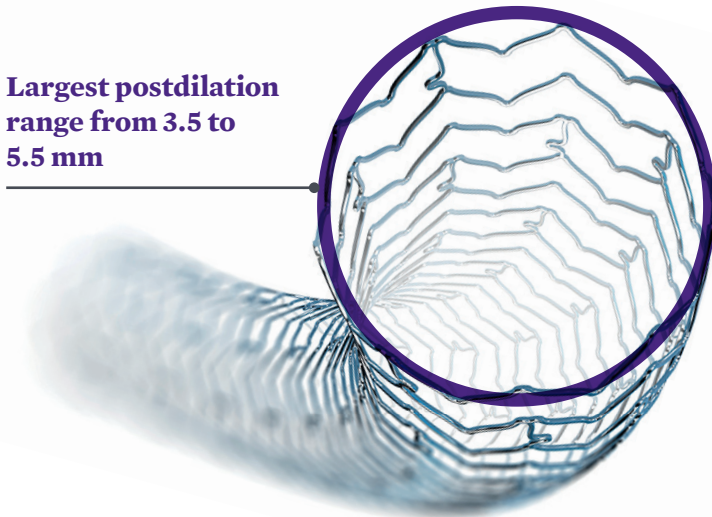
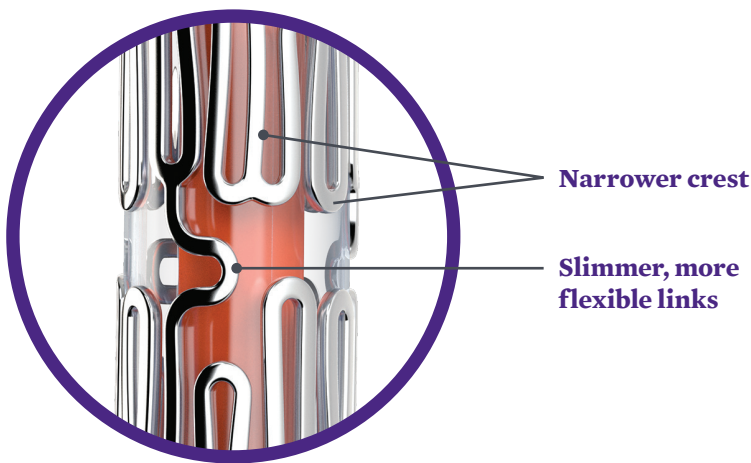


XIENCE Pro S™

Everolimus Eluting Coronary Stent System

DELIVER WITH CONFIDENCE



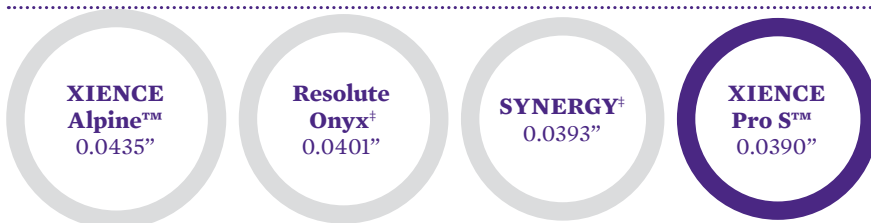
Thinner balloon
provides maximum flexibility and further lowers crimped profile

Optimized Multi-Link stent design
allows for tighter crimping and smoother crossing

XIENCE Pro S™ requires 73% less force to cross a lesion than SYNERGY+ and 64% less force than Resolute Onyx+*

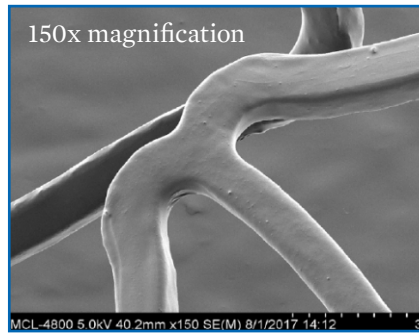
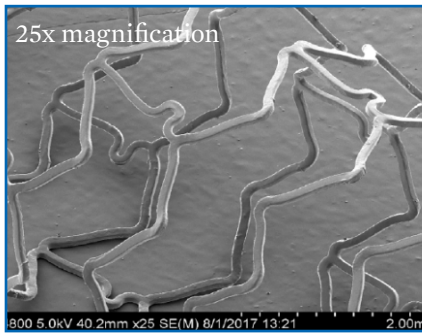
Re-engineered delivery system
ensures consistent force transmission for outstanding pushability

Ultra low stent crossing profile of 0.039"
for easier crossing enabled by the new stent design and balloon technology*



Ensures coating integrity even at max expansion

XIENCE Pro S™ coating remains intact at maximum post-dilatation expansion of 5.5 mm from 3.5 mm



XIENCE Pro S™ (3.5 x 18 mm) at max expansion of 5.5 mm.

TECHNICAL SPECIFICATIONS

STENT SPECIFICATIONS		
Stent Design	MULTI-LINK, 3-3-3, Nonlinear Link	
Stent Material	L-605 Cobalt Chromium	
Drug	Everolimus	
Drug Dose	1 µg/mm ²	
Polymer	Fluorinated Copolymer	
Strut Thickness	0.0032"	
MRI Compatibility	MR Conditional (see IFU for specific conditions)	
Shortening	0% (nominal expansion)	
Post-Dilatation Limit	SIZES (MM)	POST-DIL LIMIT (MM)
	2.0-3.25	3.75
	3.5-4.0	5.5

DELIVERY SYSTEM SPECIFICATIONS		
Nominal Pressure	9 atm for 2.0-2.5 mm; 12 atm for 2.75-4.0 mm	
Rated Burst Pressure	16 atm for All Diameters	
Shaft Measurements	Proximal 2.1F/0.71 mm	Distal 2.7F/0.89 mm
Min. GC/Sheath Diameter	5F/0.056"/1.42 mm	
Balloon Material	Pebax 72D	
Crossing Profile	0.039" (3.0 x 18 mm)	
Tip Entry Profile	0.017" (3.0 x 18 mm)	
Working Catheter Length	145 cm	

ORDERING INFORMATION

NEW SIZES

XIENCE Pro S™									
STENT DIAMETER (MM)	LENGTH (MM)								POST-DILATION LIMIT
	8	12	15	18	23	28	33	38	
2.0	1500200-08	1500200-12	1500200-15	1500200-18	1500200-23	1500200-28	1500200-33	1500200-38	3.75 mm
2.25	1500225-08	1500225-12	1500225-15	1500225-18	1500225-23	1500225-28	1500225-33	1500225-38	3.75 mm
2.5	1500250-08	1500250-12	1500250-15	1500250-18	1500250-23	1500250-28	1500250-33	1500250-38	3.75 mm
2.75	1500275-08	1500275-12	1500275-15	1500275-18	1500275-23	1500275-28	1500275-33	1500275-38	3.75 mm
3.0	1500300-08	1500300-12	1500300-15	1500300-18	1500300-23	1500300-28	1500300-33	1500300-38	3.75 mm
3.25	1500325-08	1500325-12	1500325-15	1500325-18	1500325-23	1500325-28	1500325-33	1500325-38	3.75 mm
3.5	1500350-08	1500350-12	1500350-15	1500350-18	1500350-23	1500350-28	1500350-33	1500350-38	5.50 mm
4.0	1500400-08	1500400-12	1500400-15	1500400-18	1500400-23	1500400-28	1500400-33	1500400-38	5.50 mm

* XIENCE Pro S™ Everolimus Eluting Coronary Stent System (3.0 x 18 mm) n=5, SYNERGY[†] Stent System (3.0 x 20 mm) n=5, Resolute Onyx[‡] Stent System (3.0 x 18 mm) n=5.

Caution: This product is intended for use by or under the direction of a physician. Prior to use, reference the Instructions for Use provided inside the product carton (when available), at eifu.abbottvascular.com or at medical.abbott/manuals for more detailed information on Indications, Contraindications, Warnings, Precautions and Adverse Events. **Information contained herein for DISTRIBUTION in Europe, Middle East and Africa ONLY.**

Tests performed by and data on file at Abbott. Illustrations are artist's representations only and should not be considered as engineering drawings or photographs. Photos on file at Abbott.

Abbott Vascular International BVBA

‡ Indicates a third party trademark, which is property of its respective owner.

