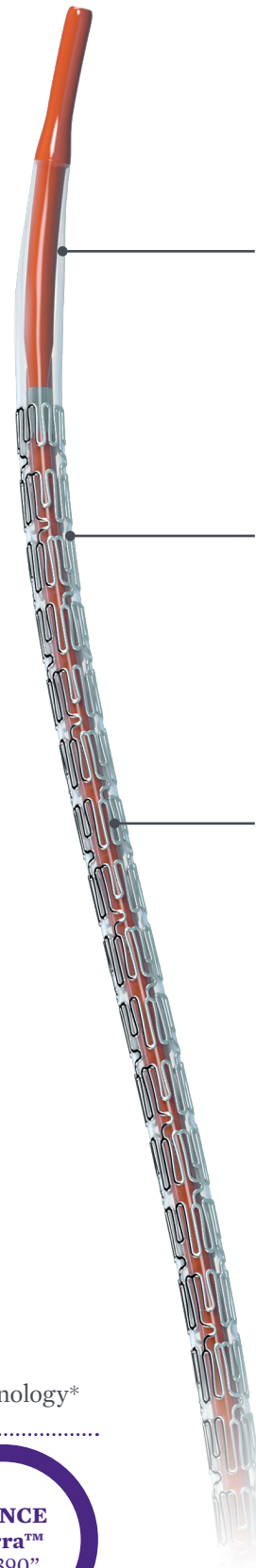
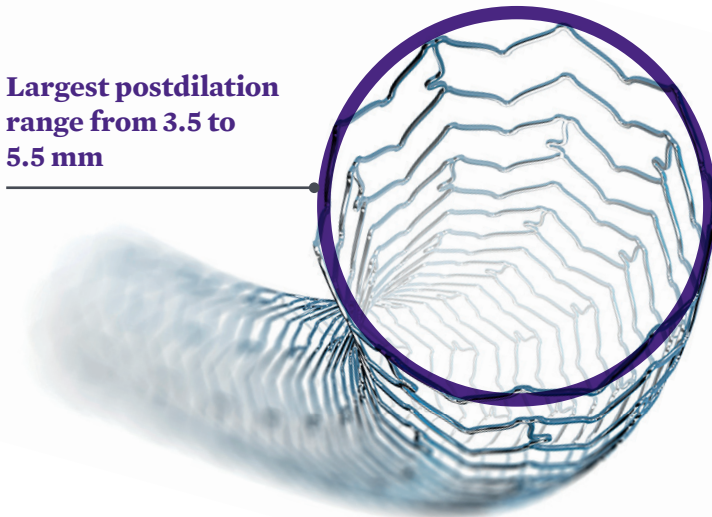
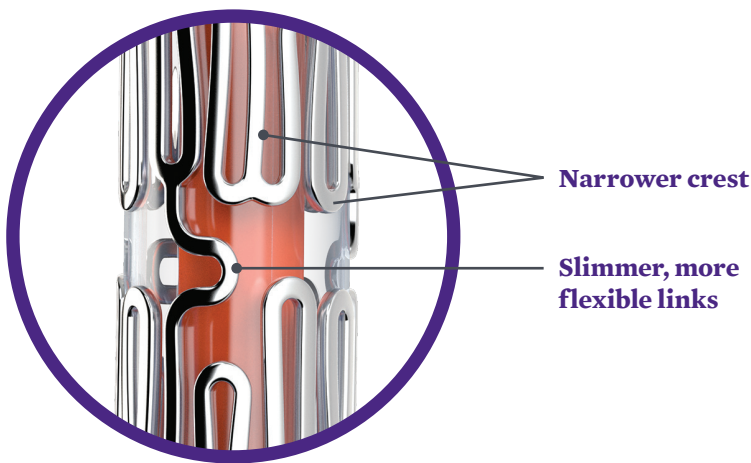


XIENCE SIERRA™

Everolimus Eluting Coronary Stent System

DELIVER WITH CONFIDENCE



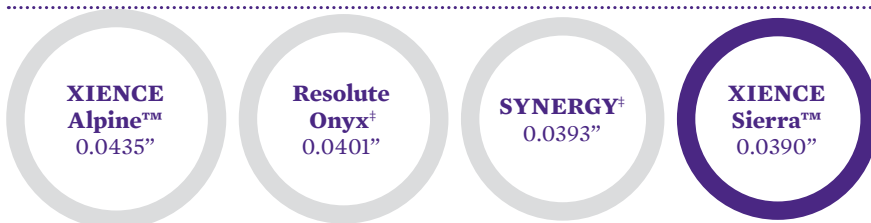
Thinner balloon
provides maximum flexibility and further lowers crimped profile

Optimized Multi-Link stent design
allows for tighter crimping and smoother crossing

XIENCE Sierra™ requires 73% less force to cross a lesion than SYNERGY+ and 64% less force than Resolute Onyx+*

Re-engineered delivery system
ensures consistent force transmission for outstanding pushability

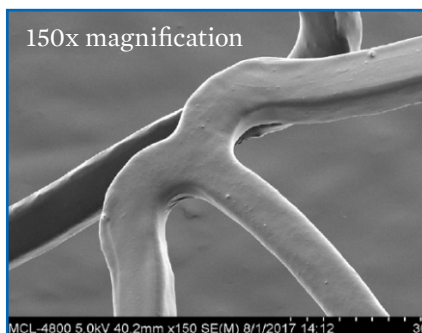
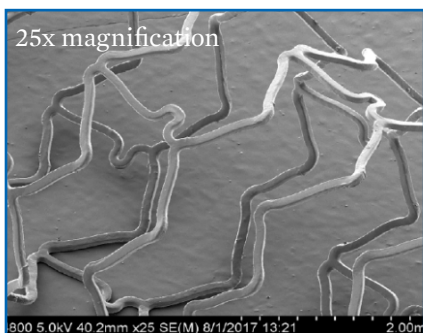
Ultra low stent crossing profile of 0.039"
for easier crossing enabled by the new stent design and balloon technology*



28 days
DAPT
FDA

Ensures coating integrity even at max expansion

XIENCE Sierra™ coating remains intact at maximum post-dilatation expansion of 5.5 mm from 3.5 mm



XIENCE Sierra™ (3.5 x 18 mm) at max expansion of 5.5 mm.

TECHNICAL SPECIFICATIONS

STENT SPECIFICATIONS		
Stent Design	MULTI-LINK, 3-3-3, Nonlinear Link	
Stent Material	L-605 Cobalt Chromium	
Drug	Everolimus	
Drug Dose	1 µg/mm ²	
Polymer	Fluorinated Copolymer	
Strut Thickness	0.0032"	
MRI Compatibility	MR Conditional (see IFU for specific conditions)	
Shortening	0% (nominal expansion)	
Post-Dilatation Limit	SIZES (MM)	POST-DIL LIMIT (MM)
	2.0-3.25	3.75
	3.5-4.0	5.5

DELIVERY SYSTEM SPECIFICATIONS		
Nominal Pressure	9 atm for 2.0-2.5 mm; 12 atm for 2.75-4.0 mm	
Rated Burst Pressure	16 atm for All Diameters	
Shaft Measurements	Proximal 2.1F/0.71 mm	Distal 2.7F/0.89 mm
Min. GC/Sheath Diameter	5F/0.056"/1.42 mm	
Balloon Material	Pebax 72D	
Crossing Profile	0.039" (3.0 x 18 mm)	
Tip Entry Profile	0.017" (3.0 x 18 mm)	
Working Catheter Length	145 cm	

ORDERING INFORMATION

NEW SIZES

XIENCE SIERRA™									
STENT DIAMETER (MM)	LENGTH (MM)								POST-DILATION LIMIT
	8	12	15	18	23	28	33	38	
2.0	1500200-08	1500200-12	1500200-15	1500200-18	1500200-23	1500200-28	1500200-33	1500200-38	3.75 mm
2.25	1500225-08	1500225-12	1500225-15	1500225-18	1500225-23	1500225-28	1500225-33	1500225-38	3.75 mm
2.5	1500250-08	1500250-12	1500250-15	1500250-18	1500250-23	1500250-28	1500250-33	1500250-38	3.75 mm
2.75	1500275-08	1500275-12	1500275-15	1500275-18	1500275-23	1500275-28	1500275-33	1500275-38	3.75 mm
3.0	1500300-08	1500300-12	1500300-15	1500300-18	1500300-23	1500300-28	1500300-33	1500300-38	3.75 mm
3.25	1500325-08	1500325-12	1500325-15	1500325-18	1500325-23	1500325-28	1500325-33	1500325-38	3.75 mm
3.5	1500350-08	1500350-12	1500350-15	1500350-18	1500350-23	1500350-28	1500350-33	1500350-38	5.50 mm
4.0	1500400-08	1500400-12	1500400-15	1500400-18	1500400-23	1500400-28	1500400-33	1500400-38	5.50 mm

* XIENCE Sierra™ Everolimus Eluting Coronary Stent System (3.0 x 18 mm) n=5, SYNERGY[®] Stent System (3.0 x 20 mm) n=5, Resolute Onyx[®] Stent System (3.0 x 18 mm) n=5.

Caution: This product is intended for use by or under the direction of a physician. Prior to use, reference the Instructions for Use provided inside the product carton (when available), at eifu.abbottvascular.com or at medical.abbott/manuals for more detailed information on Indications, Contraindications, Warnings, Precautions and Adverse Events. **Information contained herein for DISTRIBUTION in Europe, Middle East and Africa ONLY.** Check the regulatory status of the device in areas where CE marking is not the regulation in force.

Tests performed by and data on file at Abbott. Illustrations are artist's representations only and should not be considered as engineering drawings or photographs. Photos on file at Abbott.

Abbott Vascular International BVBA

Park Lane, Culliganlaan 2B, 1831 Diegem, Belgium, Tel: 32.2.714.14.11

™ Indicates a trademark of the Abbott Group of Companies.

‡ Indicates a third party trademark, which is property of its respective owner.

www.cardiovascular.abbott

©2019 Abbott. All rights reserved. 1-EH-1-9193-01 03-2019

